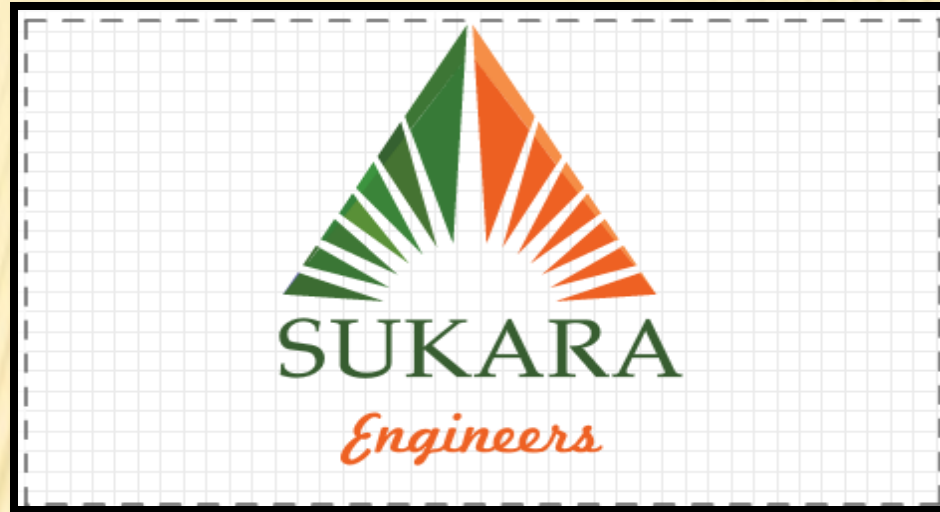
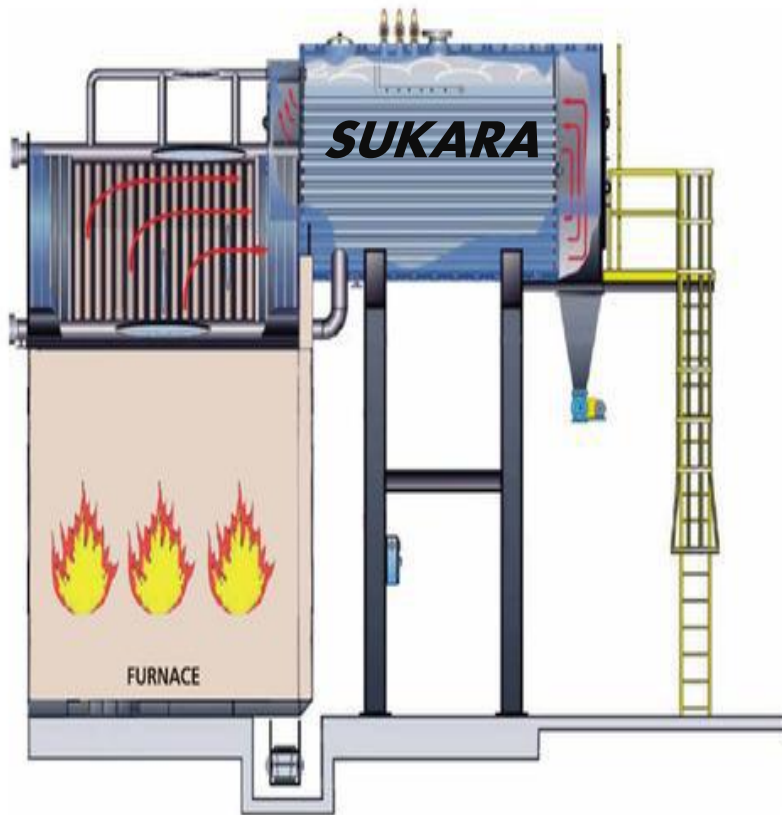


SUKARA ENGINEERS



GOVT. APPROVED BOILER MANUFACTURER AND
SPECIAL CLASS REPAIR – MAINTENANCE & ERECTION
CONTRACTOR

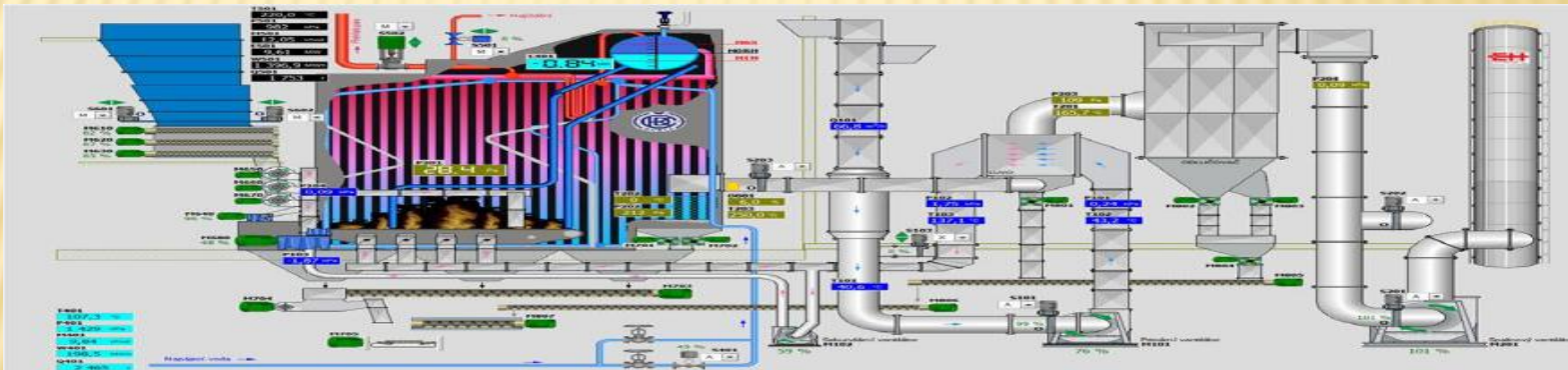
SUKARA BOILERS



OUR PRODUCTS AND SERVICES

- ❖ SUKARA Steam Boilers & Mounting and Accessories
 - ❖ Manufacturing ,Repair ,Operation & Maintenance of Boiler
 - ❖ Turnkey Projects, Structures and SS & MS Fabrication
 - ❖ Maintenance of DM-RO Plant
 - ❖ All kinds of Refinery & Solvent Plant Work
 - ❖ Skilled Manpower supply for Industrial Operation
 - ❖ Re- Tubing of Heat Exchanger & Pipe line work SS & MS
 - ❖ Combine Harvester and Tractor spare parts
 - ❖ Steam Turbines Operation & Maintenance, Wet washing ,sand Blasting.
-

OPERATION & MAINTENANCE OF BOILER



Year of Establishment : 2005

Nature of Business : Manufacturer, Supplier

WATER WALL PANEL



- ❖ *Water wall panel is made as per customer drawing with high end precision tube bending machines. The tubes used in these panels are of premium grade material providing reliable boiler operations*

HEAT EXCHANGER

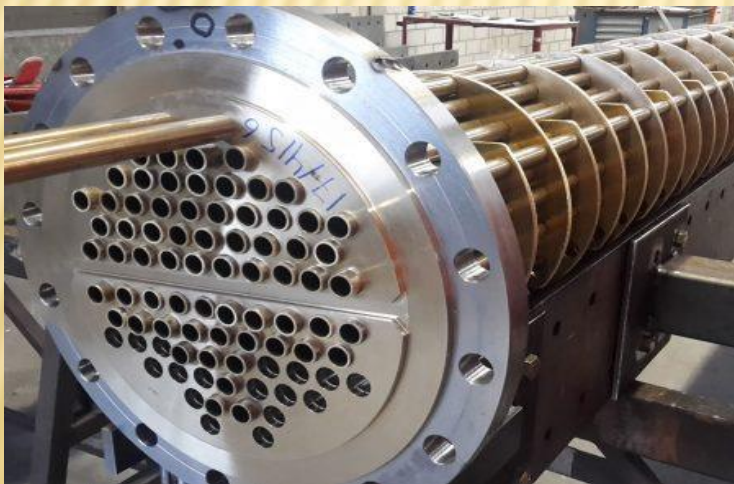


- ❖ *We manufacture a heat exchanger which is used to transfer heat between two or more fluids*

RE -TUBING HEAT EXCHANGERS & BOILERS



- ❖ *Condenser & Chiller services offers complete, on-site heat exchanger re-tubing service . we re-tube , service and repair heat exchangers: assist in pressure or hydro testing the heat exchanger.*



ECONOMIZER



- ❖ We manufacture the economizer. It is a mechanical device intended to reduce energy consumption or to perform useful function such as per heating a fluid

BOILER BED COILS AND BANK TUBES



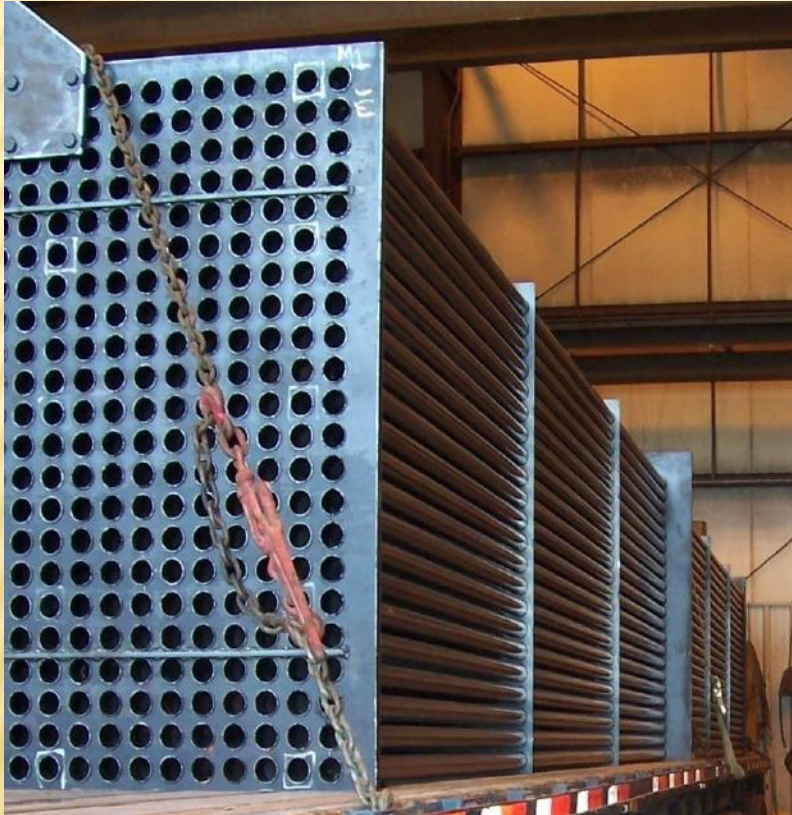
- ❖ We Manufacturing high quality bed coils and bank tubes which are manufactured with CNC Machine which increase the surface area to achieve higher heat transfer rates

SUPER HEATER



- ❖ *We manufacture a super heater . This is a device used to convert saturated steam or wet steam into superheated*

AIR PRE-HEATER (APH)



- ❖ *Air pre-heater assemblies are designed for effective heat transfer from flue gases to fresh air. The size and dimensions of the air heater assemblies are calculated and designed in line with boiler rating.*

VIBRATING SCREEN



- ❖ We are a distinguished manufacturer and supplier of premium quality Vibrating Screen. It is hugely demanded for coal dressing, metallurgy, mine & refractory plant and many more areas. The provided product is fabricated using high grade raw material and latest technology as per the set industry standards

BLOWDOWN TANK



- ❖ Blowdown tanks for boilers are used as an alternative system for cooling the bottom boiler blowdown. These large tanks retain the blowdown water volume from one blow after the flash steam has been vented to the atmosphere and allow the water to cool down by natural convection over 6-12 hour period. The cooled water will be below 140° Fahrenheit when it is displaced by the next blowdown and forced out of the overflow drainpipe.

DEAERATOR TANK



- ❖ The Deaerator tank acts as a Feed Water Tank to store cold and hot fluid in order to remove dissolved air or non-condensable gases from the fluid.

CBD AND IBD TANK



- ❖ With the continuous support of our adept and seasoned professionals, we are devoted towards offering a commendable range of CBD And IBD Tank. This tank is widely applicable in domestic and industrial areas for various storage purposes.

FLASH VESSEL



- ❖ Flash Vessel is equipment used in any steam plant for flash evaporation recovery system. Usually high pressure condensate is reduced to lower pressure and is separated in the flash recovery system to prevent pollution of boiler feed tank or heat transfer surfaces

HEAT RECOVERY UNIT(HRU)



- ❖ Made from superior grade pipes and shell Assembly HRU increase the boiler efficiency thus reducing the input cost. these units are manufactured as per drawing or data provided by customer.

BUCKET ELEVATOR & CONVEYER



- ❖ Reliable operation , high conveying capacities, longevity and low operational costs characterize SUKARA bucket elevators. Depending on material, application and local conditions they are configured with forged central chain or belt.



CHIMNEY



- ❖ We manufacture the chimney. It is a structure that provide ventilation for hot flue gases or smoke from a boiler

AIR POLLUTION CONTROL SYSTEM



- ❖ *We manufacture high efficiency dust collection equipment, which not only reduces particulate emission in flue gases but also prevent smoke nuisance & helps in reducing ID fan erosion.*

F D FAN



- ❖ We manufacturer a unique range of Forced Draft (F.D. Fans) which are designed by specially developed software and experienced design team.

I D FAN



- ❖ We manufacturer a unique range of Induced Draft (I.D. Fans) which are designed by specially developed software and experienced design team.

ASH/AIR LOCK ROTARY VALVE



- ❖ *The Ash/ Air Lock Rotary Valve is manufactured by using premium quality raw material (Cast Iron, Mild Steel: as per requirement) which highly resistant to erosion caused by ash particles.*

SCREW FEEDER



- ❖ *Screw feeders are available in different sizes with heat treated plate being used for making screw. This enhances the life of screw thus providing smooth and maintenance free operation of fuel feeding.*

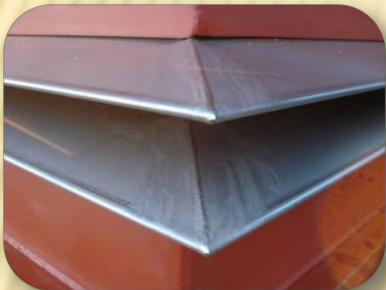
BUTTERFLY DAMPERS



- ❖ *Butterfly dampers are fabricated with high accuracy to provide zero passing of media and jamming free operation.*

METALLIC EXPANSION BELLOW/JOINTS

- ❖ Made from high grade material of adequate thickness these expansion joints provide required expansion needed in various ducting. These expansion bellows can be customized as per customer requirement.



FUEL CROSS



- ❖ *Apart from the normal practice followed in industry of making fuel cross by cast iron, we offer fuel cross made of cast steel, which are resistant to jerk load.*

FUEL MIXING NOZZLE ASSEMBLY



- ❖ *We offer a premium quality collection of fuel mixing nozzle assemblies for effective mixing and conveying of fuel through primary air lines for optimum combustion of fuel in boiler furnace.*

COAL NOZZLE



- ❖ *We are affianced in manufacturing and supplying a huge array of quality rich Coal Nozzle. The range of coal nozzle can be customized to meet the different needs of the clients.*

AIR NOZZLE



- ❖ *We offer a premium quality collection of Air Nozzles providing effective fluidization for optimum combustion of fuel in boiler furnace.*

FURNACE MANHOLE DOOR



- ❖ *The furnace man hole door is manufactured by using supreme grade raw material which can withstands high furnace temperatures thus providing longer functional life.*

DRAIN GATE VALVES



- ❖ *Drain gate valves are fabricated as per the area of application which includes both hot bed material drain and ash drain*

FERRULE OF APH TUBES



- ❖ *Made from stainless steel these nitrate coated ferrules for APH (Air Pre-heater) tubes provides longer functional life*

CRANK SHAFT & HUB SPROCKET ASSEMBLY



- ❖ The crank shafts are manufactured with highest accuracy and surface finish and customized as per the specific needs and requirements of our clients.
- ❖ The hub and sprocket are machined separately and assembled as per requirement. We also manufacture a wide range of Gears as per drawings provided by our clients.

SS SHIELD FOR BED/ ECONOMIZER COIL TUBES



- ❖ Made from stainless steel these nitrate coated shields provides resistance to abrasion against high velocity hot sand and dust particles hitting against bed/ economizer coils thus ensuring reliable boiler operations.

SKILLED MANPOWER SUPPLY FOR INDUSTRIAL OPERATION



- ❖ We are a leading service provider of Installation and Maintenance services of our products. Our team comprising of BOE (Boiler Operation Engineers), certified PMP (Project Management Professional), Engineers, Supervisors, IBR welders, Non IBR Welders , Fitters , Grinder man , Riggers , Helpers , 1st and 2nd class qualified boiler operators. Our professionals follow stringent quality parameters and safety standards while executing an array of quality driven services to ensure hassle free functioning of customer's business operations.

TUBE EXPANDING



- ❖ *Tube expanders are devices that are used to increase the diameter of a piece of metal tubing . there are several benefits of using a tube expander with a small copper tube .*



PLATE BENDING MS & SS



- ❖ In metalworking, rolling is a metal forming process in which metal stock is passed through one or more pairs of rolls to reduce the thickness and to make the thickness uniform. The concept is similar to the rolling of dough. Rolling is classified according to the temperature of the metal rolled.



PROFILE CUTTING



REDIAL DRILLING



QUALITY ASSURANCE



❖ *Inspection and Material Quality Check being carried out at Sukara*



❖ *At Sukara the Client is assured a top grade quality of work always*

ONGOING PROJECTS

- ❖ HPCL-Mittal Energy Limited
- ❖ Steag Energy India Pvt. Ltd.
- ❖ JCT Group
- ❖ Sukhbir Agro Power Plant
- ❖ A P Refineries Limited
- ❖ IOL Chemicals And Pharmaceuticals Limited
- ❖ Pioneer industries Limited
- ❖ Chahal Boilers Pvt. Ltd.
- ❖ Ricela health food Limited
- ❖ BCL industries and infrastructure Limited
- ❖ BCL distillery
- ❖ Kissan fats Limited
- ❖ Tiwana oil mills private Limited
- ❖ Riba textiles Limited
- ❖ Viaton energy Private Limited
- ❖ Sanjog sugar & eco power plant Limited
- ❖ A P organic Limited
- ❖ AAR KAY chemicals Limited
- ❖ Vishal paper industries Private Limited
- ❖ Twinkle papers Limited
- ❖ Garg ply woods Industries Limited
- ❖ SSG paper mills industries
- ❖ Rana Mohendra papers Limited

COMMERCIAL INFORMATION

- ❖ Firm Name: SUKARA ENGINEERS
- ❖ Address: Handiaya Chowk Barnala 148101 (PUNJAB)
- ❖ Contact No.: +91 9501531515
+91 9878953303
+91 9877749242
+91 8427750499
- ❖ Email : sukaraengineers@gmail.com
- ❖ Website: www.sukara.in
- ❖ Contact Person: Mr. Ashok Kaushal
- ❖ Designation: Managing Director
- ❖ Bankers Name: Allahabad Bank.
- ❖ Address: Barnala Branch P C Road Barnala-148101 Punjab
- ❖ Account No.: 50227051434
- ❖ IFSC Code: ALLA0212219
- ❖ MICR No.:
- ❖ GST No.: 03ACQFS0232E1ZI
- ❖ VAT No.: 03272178379
- ❖ PAN No.: ACQFS0232E
- ❖ Service Tax No.: ACQFS0232ESD001

GOVT. APPROVED LICENCE

- ❖ *Boiler Manufacturing licence no.* : *DOB/PB/Jal/15*
- ❖ *Boiler Parts Manufacturing licence no.* : *DOB/PB/Jal/2090*
- ❖ *Special Class Erector licence no.* : *DOB/PB/Jal/52*
- ❖ *PWD Road Work licence no.* : *4401*
- ❖ *PWD Building Work licence no.* : *4405*
- ❖ *Labour licence no.* : *JAL/46(L-316)/2017/ALC*
- ❖ *EPF licence no.* : *PBBTI1038098*
- ❖ *ESI licence no.* : *12000629440000605*

**THANK YOU FOR GIVING US YOUR PRECIOUS
TIME AND ATTENTION TO INTRODUCE OUR
ORGANIZATION TO YOU.**



SUKARA
Engineers
A Product Company